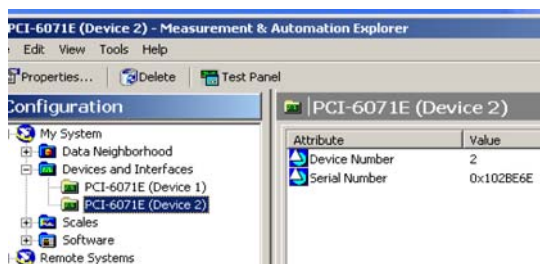


## Upgrading your MED64 PC (For SU-MED640/Panasonic amp.)

2015/8/21

1. Install Win7 to your new PC.
  2. Install National Instruments driver to your new PC.  
 Version: NI-DAQmx14.0 (download from the below)  
<http://www.ni.com/download/ni-daqmx-14.0/4918/en/>
  3. Remove 2 sets of A/D cards (PCI16075, National Instruments) from your old PC.
  4. Install the 2 sets of A/D cards to your new PC. Do NOT forget installing bus cable to connect 2 cards.
- CAUTION:** Avoid static when touching the A/D cards.
5. Turn on your new PC. Let the PC to recognize 2 cards. (The pop-up message to show you recognition will show up twice.)
  6. Open the "Measurement and Automation". Confirm 2 sets of NI-PCI16074E are listed in the Configuration.



7. Install the latest version of Mobius to your new PC.  
<http://www.med64.com/wp/med64support/software-downloads-support/>

### Checking channels assignment

1. Connect your new PC to the SU-MED640 amplifier with 2 NI cables (100 pin). Make sure both NI cable connectors are plugged in firmly and tightened by the side screws. (loosen connection can introduce noise.)
2. Run the Mobius with saline and look at the signals at 64ch displays. (Use the "Noise Check" workflow template) Plug the stimulation cord into a channel (e.g. ch 8) or touch the channel with your hand. If you see large noises at the same channel (e.g. ch8), the channel assignment is correct. If you see large noises another channels (e.g.ch40), the channel assignment is wrong. Swap the NI cables to fix this.

