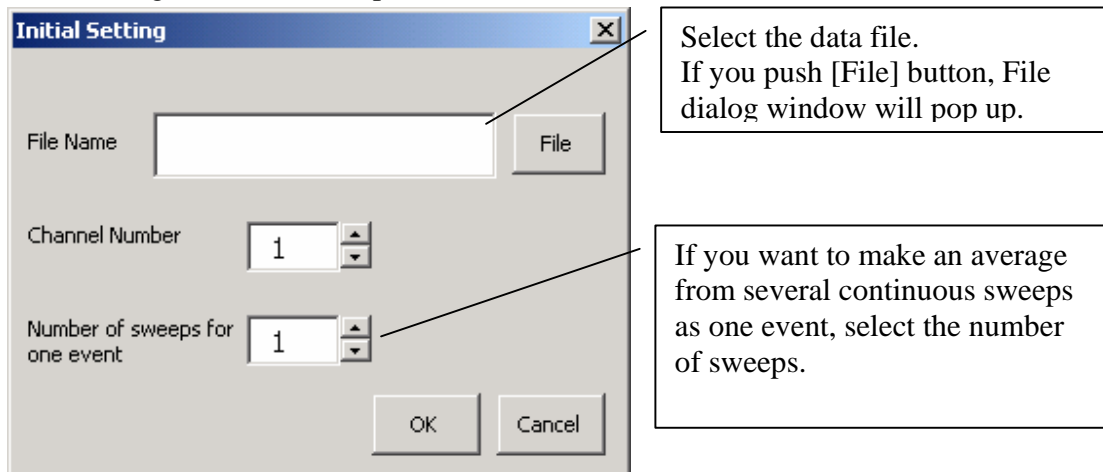


MED Wrapper Excel Macro

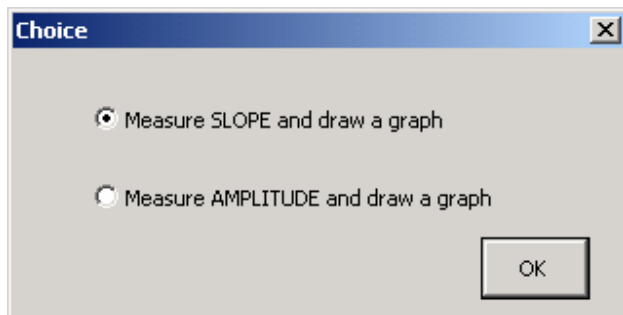
1. How to use MED Conductor macro

This macro has two measuring function slope or amplitude in any one channel out of 64 channel. And the macro can read the MED64 conductor's binary files directly.

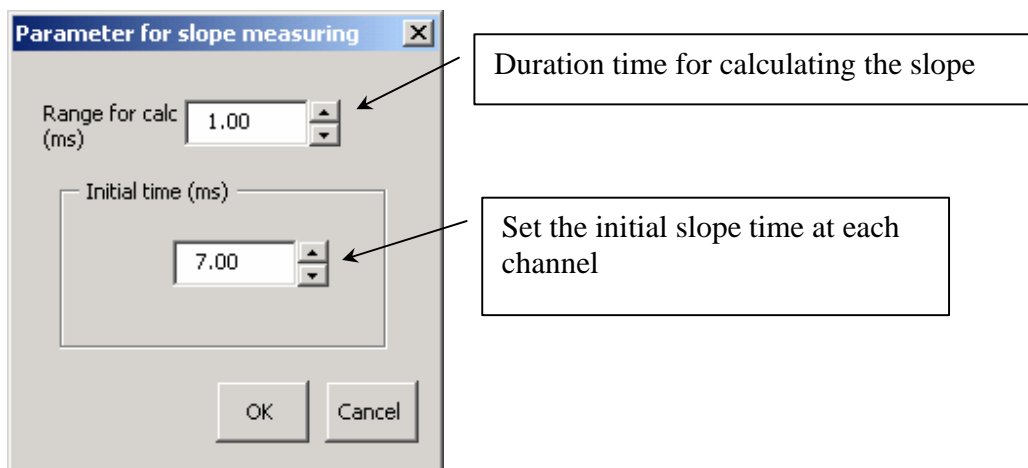
- 1) Run the "MED_Conductor_Macro.xls" and click "measure amp & slope" button.
- 2) Following window come up.



- 3) Select data file and channel number for analysis.
- 4) Select the measuring type



- 5) If you select "SLOPE", following window will pop up.
After click [OK], macro will automatically measure and draw the graph.



6) If you select “AMPLITUDE”, following window will pop up

The image shows a dialog box titled "Parameter for amplitude measuring" with the following fields and callouts:

- baseline (ms):** Two input fields with values 4.00 and 4.50. Callout: "The average of this area will be zero for calculation".
- Search range (ms):** Two input fields with values 7.00 and 15.00. Callout: "Searching area for minimum/maximum point".
- Type:** Radio buttons for "Local minimum" (selected) and "Local maximum". Callout: "Minimum: [V-shaped curve] Maximum: [inverted V-shaped curve]".
- Normalize:** Radio buttons for "None" (selected), "with TWO points", and "with THREE points". Callout: "For avoid noise artifact. *with TWO points: make average with two point at the peak *with THREE points : make average with three points at the peak".
- Buttons:** "OK" and "Cancel" buttons at the bottom.

After click [OK], macro will automatically measure and draw the graph.