



Europäisches Patentamt
European Patent Office
Office européen des brevets



(11) **EP 0 689 051 B1**

(12) **EUROPEAN PATENT SPECIFICATION**

(45) Date of publication and mention
of the grant of the patent:
20.11.2002 Bulletin 2002/47

(51) Int Cl.7: **G01N 33/487**, G01N 33/483,
A61B 5/04, G01N 27/00,
C12M 1/34, G01N 27/403

(21) Application number: **95108977.0**

(22) Date of filing: **09.06.1995**

(54) **Cell potential measurement apparatus having a plurality of microelectrodes**

Zellpotentialmessvorrichtung mit mehreren Mikroelektroden

Appareil de mesure du potentiel cellulaire avec plusieurs microélectrodes

(84) Designated Contracting States:
DE FR GB IT

(30) Priority: **13.06.1994 JP 13017694**

(43) Date of publication of application:
27.12.1995 Bulletin 1995/52

(73) Proprietor: **Matsushita Electric Industrial Co., Ltd.**
Kadoma-shi, Osaka 571 (JP)

(72) Inventors:

- **Sugihara, Hirokazu,**
Matsushita Elec. Ind. Co., Ltd
Osaka 576 (JP)
- **Kamei, Akihito, Matsushita Elec. Ind. Co., Ltd.**
Nara-shi, Nara 631 (JP)
- **Kobayashi, Yasushi,**
Matsushita Elec. Ind. Co., Ltd.
Hirakata-shi, Osaka 573-01 (JP)
- **Taketani, Makoto, Matsushita Elec. Ind. Co., Ltd.**
Tsuzuki-gun, Kyoto 610-03 (JP)
- **Mitsumata, Tadayasu,**
Matsushita Elec. Ind. Co., Ltd.
Hirakata-shi, Osaka 573 (JP)

(74) Representative: **VOSSIUS & PARTNER**
Siebertstrasse 4
81675 München (DE)

(56) References cited:

- EP-A- 0 585 933** **US-A- 5 187 096**
- **BIOSENSORS & BIOELECTRONICS**, vol. 9, no. 1994, 1994, AMSTERDAM, NL, pages 737-741, XP002037334 **W. NISCH ET AL.**: "A thin film microelectrode array for monitoring extracellular neuronal activity in vitro"
 - **JOURNAL OF NEUROSCIENCE METHODS**, vol. 5, 1982, AMSTERDAM, NL, pages 13-22, XP002037335 **G.W. GROSS, ET AL.**: "Recording of spontaneous activity with photoetched microelectrode surfaces from mouse spinal neurons in culture"
 - **PATENT ABSTRACTS OF JAPAN** vol. 16, no. 75 (P-1316), 24 February 1992 & **JP 03 265814 A (OLYMPUS OPTICAL CO LTD)**, 26 November 1991,

EP 0 689 051 B1

Note: Within nine months from the publication of the mention of the grant of the European patent, any person may give notice to the European Patent Office of opposition to the European patent granted. Notice of opposition shall be filed in a written reasoned statement. It shall not be deemed to have been filed until the opposition fee has been paid. (Art. 99(1) European Patent Convention).

Description

[0001] This invention relates to a cell potential measurement apparatus which is used in the field of electro-neurophysiology for measuring the potential change associated with activities of nerve cells or nerve organs.

[0002] Recently, medical investigations into nerve cells and the possibility of using nerve cells as electric elements have been actively pursued. When nerve cells are active, an action potential is generated. This action potential arises from a change in ion concentration inside and outside the cell membrane which is accompanied by a change in ion permeability in nerve cells and thus from the change in cell membrane potential accompanied thereby. Therefore, measuring this potential change accompanied by the ion concentration change (that is, the ion current) near the nerve cells with electrodes enables the detection of activities of nerve cells or nerve organs.

[0003] In order to measure the above-mentioned potential arising from cell activities, it is possible, for example, to insert an electrode comprising glass into an area of cells to measure the extracellular potential. When the evoked potential due to stimulation is measured, a metal electrode for stimulation is inserted together with a glass electrode for recording. However, measurement by the insertion of these electrodes has the possibility of damaging the cells, and measurement over a long period of time is difficult to carry out. In addition, due to restrictions of space and the need for operating accuracy, multi-point simultaneous measurements are also difficult to carry out.

[0004] Therefore, the present inventors developed a planar electrode comprising an insulation substrate and a multiplicity of microelectrodes, their conductive patterns being formed thereon with the use of a conductive material, and a cell culture could be placed on that surface (disclosed in Laid-open Japanese patent application Nos. (Tokkai Hei) 6-78889 and 6-296595). With this planar electrode, multi-point simultaneous measurements of potential change can be carried out without being affected by restrictions of space at a plurality of points with a short electrode-to-electrode distance. Also, this electrode enables long-term measurement.

[0005] An apparatus for cell potential measurement is described in BIOSENSORS & BIOELECTRONICS, vol. 9, no. 1994, 1994, AMSTERDAM NL, pages 737-741, W. NISCH ET AL.: 'A thin film microelectrode array for monitoring extracellular neuronal activity in vitro'. This apparatus uses a microelectrode array being provided on a glass substrate. By using this apparatus neuronal electrical activity can be recorded and analyzed.

[0006] In EP-0 585 933 A2 a planar electrode has been described. This planar electrode enables multi-point simultaneous stimulation and measurement of nerve cells as well as signal transmission and observation throughout many cells.

[0007] However, a measurement apparatus which

can efficiently use this kind of planar electrode, conduct measurements accurately and efficiently, and improve the measurement results has been strongly desired. Therefore, it is an object of this invention to provide a cell potential measurement apparatus which is capable of accomplishing these needs in the art.

[0008] In order to accomplish these and other objects and advantages, a cell potential measurement apparatus of this invention comprises the features of claim 1.

[0009] It is preferable that the cell potential measurement apparatus of this invention further comprises an optical observation means for observing the cells optically. It is also preferable that the cell potential measurement apparatus of this invention further comprises a cell culturing means for maintaining an environment for culturing cells which are placed on the integrated cell holding instrument. This configuration enables measurement over a long period of time.

[0010] Generally, the measurement conducted by means of the above-configured apparatus of this invention is carried out, for example, in the following steps. Sample cells are placed in a cell holding part of an integrated cell holding instrument, and a plurality of microelectrodes contact the cells.

[0011] An image of the cells is obtained by an optical observation means. A stimulation signal is applied between a pair of electrodes selected optionally from the plurality of microelectrodes by a stimulation signal supply means via an electric connection means. A change of the evoked potential over time which is obtained in each of the other electrodes is provided to a signal processing means via the electric connection means, which is then output, for example, to a display device etc. after going through the necessary signal processing. The measurement of the spontaneous potential which is not provided with a stimulation signal is carried out in a similar way.

[0012] The above-mentioned electro-chemical measurement of cells must be conducted in a condition in which the cells are alive. Therefore, it is common to use cultured cells, and the cell holding part of the integrated cell holding instrument can be equipped with a culture medium. Since the integrated cell holding instrument is detachable from the measurement apparatus, each integrated cell holding instrument can be placed inside an ordinary incubator for cell cultures and then taken out from the incubator and placed in the measurement apparatus. When a cell culturing means is further provided to maintain an environment for culturing the cells on the integrated cell holding instrument, long-term measurement is enabled. This cell culturing means comprises a temperature adjustment means for maintaining a constant temperature, a means for circulating a culture solution, and a means for supplying a mixed gas of air and carbon dioxide (e.g., CO₂ 5%).

[0013] It is preferable that the integrated cell holding instrument comprises a plurality of microelectrodes arranged in a matrix form (latticed) on the surface of a

glass plate, conductive patterns for drawing these microelectrodes, electric contact points which are connected to edge parts of these conductive patterns, and a coating of insulation covering the surface of these conductive patterns, and the cell holding part is disposed in an area including the plurality of microelectrodes.

[0014] The use of a transparent glass plate as the substrate facilitates optical observations of the cells. Therefore, it is preferable that the conductive patterns or the insulation coating are also substantially transparent or translucent. Furthermore, when the plurality of microelectrodes is arranged in a matrix form, it is easier to specify positions of electrodes which are applied with stimulation signals or electrodes where voltage signals arising from cell activities are detected. For example, it is preferable to arrange 64 microelectrodes in 8 columns and 8 rows. In addition, the surface area of each electrode should be as great as possible for reducing surface resistance and enhancing detection sensitivity. However, taking restrictions etc. arising from the electrode-to-electrode distance and space resolution of measurement into consideration, it is preferable that each electrode has a surface area of from $4 \times 10^2 \mu\text{m}^2$ to $4 \times 10^4 \mu\text{m}^2$.

[0015] According to the configuration of the invention, fixation of the glass plate and routing the microelectrodes to the outside can be performed easily and accurately. Furthermore, it is preferable that the electric connection means not only fixes the holder, but also comprises a printed circuit board having an outside connection pattern which is connected to the contact of the holder via a connector. As a result, connection with outside instruments, namely, with a stimulation signal supply means and a signal processing means is facilitated. For the transmission of stimulation signals or detection signals with as little attenuation and distortion as possible, the contact resistance of the electric contact point with the contact as well as the contact resistance of the contact with the connector are both preferably below 30 m ohm.

[0016] In addition, it is preferable that the optical observation means comprises an optical microscope, and an image pick-up device and an image display device connected to the optical microscope. In other words, the image of the cells which is enlarged by a microscope is picked up by an image pick-up device (e.g., video camera) and then displayed in an image display device (e.g., a high-accuracy display), so that it is easier to conduct the measurement while observing the cells and the electrode position. More preferably, when the optical observation means is further comprised of an image storage device, it is possible to record measurement results.

[0017] Also, when a pulse signal generator is used as the stimulation signal supply means, various kinds of signal waveforms can be applied as stimulation signals to the cells. It is preferable that the signal processing means comprises a multi-channel amplifier which amplifies a detection signal arising from cell activities and

a multi-channel display device which displays an amplified signal waveform in real-time, and that signal waveforms (change of cell potential over time) obtained from a plurality of electrodes can be displayed simultaneously.

[0018] It is preferable that a computer is provided to output the stimulation signal via a D/A converter, and at the same time, to receive and process an output signal arising from electric physiological activities of the cells via an A/D converter. As a result, the stimulation signal can be determined as an optional waveform on the screen or a waveform of a detection signal can be displayed on the screen. In addition to these operations, it is easier to display these signals after being processed in various forms or to output them to a plotter or to store them. Furthermore, with the use of this computer, the optical observation means and the cell culturing means can be controlled.

[0019] FIG. 1 is a perspective view showing an integrated cell holding instrument used for a cell potential measurement apparatus in one embodiment of this invention.

[0020] FIG. 2 is an assembly diagram of an integrated cell holding instrument.

[0021] FIG. 3 is a top view showing 64 microelectrodes and conductive patterns disposed in the center of a planar electrode comprising an integrated cell holding instrument.

[0022] FIG. 4 is a model cross-sectional view of a planar electrode.

[0023] FIGS. 5 (A) and 5 (B) are a top view and a side cross-sectional view showing a state in which a planar electrode is fixed by being held between upper and lower holders.

[0024] FIG. 6 is a perspective view of the planar electrode and the upper and lower holders of FIGS. 5 (A) and 5 (B).

[0025] FIG. 7 is a side view of a contact attached to an upper holder.

[0026] FIG. 8 is an assembly diagram of an integrated cell holding instrument seen from an opposite direction of FIG. 2.

[0027] FIG. 9 is a block diagram of a cell potential measurement apparatus in one embodiment of this invention.

[0028] FIGS. 10 (A) and 10 (B) are graphs showing one comparative example of a voltage waveform arising from activities of cultured cells measured by means of an integrated cell holding instrument used in this invention and a voltage waveform measured by means of a conventional general purpose glass electrode (electrode for measurement of extracellular potential).

[0029] FIGS. 11 (A) to 11 (C) are diagrams showing measurement results of the spontaneous potential of cultured cells measured by using an apparatus of this invention.

[0030] FIGS. 12 (A) to 12 (C) are diagrams showing measurement results of the evoked potential of cultured

cells measured by using an apparatus of this invention.

[0031] This invention will now be described in detail by referring to the attached figures and the following examples. The examples are illustrative and should not be construed as limiting the invention in any way.

[0032] First, an integrated cell holding instrument used for a cell potential measurement apparatus of this invention will be explained. The integrated cell holding instrument 1, as shown as a perspective view in FIG. 1 and as an assembly diagram in FIG. 2, comprises a planar electrode 2, which is disposed with a plurality of microelectrodes and their conductive patterns on the surface of a glass plate, half-split holders 3, 4 for fixing the planar electrode 2 by holding it from the top and bottom, and a printed circuit board 5 on which these holders are fixed.

[0033] The planar electrode 2 is approximately the same as that disclosed in Laid-open Japanese patent application No. (Tokkai Hei) 6-78889 and others. The planar electrode 2 comprises, for example, a substrate made of a transparent plexiglass having a thickness of 1.1 mm and a size of 50 x 50 mm, and in the center of this substrate, 64 microelectrodes 11 are formed in a matrix form of 8 x 8, and each microelectrode is connected to a conductive pattern 12 (cf. FIG. 3). Each of the electrodes 11 has a size of 50 x 50 μm square (area 25 x 10² μm^2), and the center-to-center distance between adjacent electrodes is 150 μm . Furthermore, each side of the substrate has 16 electric contact points 7 totalling to 64 points (cf. FIG. 2). These electric contact points 7 are connected with the 64 microelectrodes 11 disposed in the center of the substrate to correspond 1 to 1 to the conductive patterns 12. The 16 electric contact points 7 on each side are arranged with a pitch of 1.27 mm. Next, a method of manufacturing this planar electrode 2 will be explained based on its cross-sectional view shown as FIG. 4. Each part in FIG. 4 is shown in an enlarged scale for convenience.

[0034] ITO (indium tin oxide), for example, is applied to form a layer of 150 nm thickness on the surface of a glass plate 13, which is then formed into the conductive patterns 12 using a photoresist and etching. On top of this layer, a negative photosensitive polyimide is applied to form a layer of 1.4 μm thickness, which is then formed into an insulation film 14 in a similar manner. The ITO layer is exposed at the microelectrodes, and at the electric contact points, and nickel 15 of 500 nm thickness and gold 16 of 50 nm thickness, are coated on these parts. A cylindrical polystyrene frame 6 (cf. FIG. 2) with an inner diameter of 22 mm, an outer diameter of 26 mm, and a height of 8 mm is adhered (via a conductive pattern 8 and an insulation film 9) on the glass plate 13 using a silicone adhesive. This cylindrical polystyrene frame 6 is fixed with its center matching the center of the glass plate 13, that is, the central part of the 64 microelectrodes, and the inside of the polystyrene frame 6 becomes a cell holding part. The inside of this polystyrene frame 6 is filled with a solution comprising 1 wt.

% of chloroplatinic acid, 0.01 wt.% of lead acetate, and 0.0025 wt.% of hydrochloric acid. An electric current of 20 mA/cm² is generated for 1 minute to deposit platinum black 11a on the surface of the gold plating of the microelectrodes.

[0035] Next, the half-split holders 3, 4 for fixing the planar electrode 2 by holding from the top and bottom will be explained. The holders 3, 4 made, for example, of resin are provided with a stage part for holding a frame part of the planar electrode 2 and with a rectangular opening in the central part, as shown in FIG. 2. The upper holder 3 is equipped with a pair of fixtures 8 and 16 x 4 pairs of contacts 9.

[0036] A top view of the holders 3, 4 which hold and fix the planar electrode 2 is shown in FIG. 5 (A), and its side view (B-B cross-sectional view) is shown in FIG. 5 (B), and its perspective view seen from a bottom side is shown in FIG. 6. As clearly shown in these figures, the fixture 8 is pivoted on two opposing sides of the upper holder 3 by an axis pin 8a. Furthermore, a groove 4a is formed on two opposing sides of the lower holder 4 in the bottom face. By fitting a convex part 8b of the fixture 8 into the groove 4a, the upper and the lower holders 3, 4 are firmly fixed with the planar electrode 2 held in between.

[0037] The 64 contacts 9, which are disposed in the upper holder 3 to correspond to the electric contact points 7 of the planar electrode 2, are formed by processing an elastic, conducting metal plate such as a plate comprising BeCu coated with Ni and Au, and the contact 9 has a shape shown in FIG. 7. In other words, the contact 9 is comprised of a pin part 9a, and its base part 9b, and a movable contact part 9d extending from the base part 9b via a curved part 9c. According to this structure, the movable contact part 9d is capable of elastic displacement against the base part 9b. The upper holder 3 has 64 (16 x 4) holes which are inserted with the pin parts 9a of the contacts 9, and the same number of grooves are also formed which fit the base parts 9b.

[0038] As shown in FIG. 2 and FIG. 5 (B), the pin part 9a protrudes from the upper holder 3 at the point where the contact 9 is inserted into the above-mentioned hole and the groove and fixed. By alternately arranging the contacts 9 having two different lengths of the base part 9b, 16 pin parts 9a protruding from the upper holder 3 are lined in two staggered rows. This pin part 9a is connected to a connector which is mounted on a printed circuit board 5 used for connection with the outside.

[0039] On the other hand, the movable contact part 9d of the contact 9 protrudes from the bottom face of the upper holder 3 at the point where the contact 9 is inserted into the holder and the groove of the upper holder 3 and fixed. This arrangement is shown in FIG. 8, which is an assembly diagram seen from the side opposite the assembly diagram of FIG. 2. In this state, the planar electrode 2 is fixed between the holders 3, 4, the movable contact part 9d of each contact 9 touches the electric contact point 7 of the planar electrode 2, and a pre-

determined contact pressure is exerted on the contact part due to elastic deformation of the curved part 9c. In this way, the electric contact point 7, which is connected to the microelectrode 11 of the planar electrode 2 by way of the conductive pattern 12, is electrically connected with small contact resistance (less than 30 m ohm) to the contact 9.

[0040] Next, the printed circuit board 5 will be explained. This printed circuit board 5 serves not only for fixing the assembly of the planar electrode 2 and the holders 3, 4, but also for routing an electrical connection via a connector to the outside, starting from the microelectrode 11 of the planar electrode 2 via the conductive pattern 12 via the electric contact point 7 to the contact 9. Furthermore, this printed circuit board 5 facilitates handling procedures, for example, installation to the measurement apparatus.

[0041] This printed circuit board 5 comprises a glass epoxy substrate disposed with double-faced patterns, and on the back face shown in FIG. 8, a connector 5a is disposed at four parts surrounding a circular opening formed in the center. By inserting the 16 pin parts 9a which are protruding in two staggered rows from the four surface parts of the upper holder 3 into each corresponding connector 5a, the assembly of the planar electrode 2 and the holders 3, 4 is fixed at the printed circuit board 5, and at the same time, they are connected electrically.

[0042] At an edge part 5b on both sides of the printed circuit board 5, electric contact points are formed at 2.54 mm pitch used for a double-faced connector edge, and these electric contact points and the connectors 5a in the central part are connected by conductive patterns 5c. An inner row of the double-sided connector 5a is formed by a surface pattern, whereas an outer row is formed by a back side pattern, and each of the edge parts 5b is provided with 32 electric contact points formed for both sides together, totalling 64 electric contact points. For the purpose of assuring mechanical fixation, the upper holder 3 can be fixed to the printed circuit board 5 using a vise.

[0043] A preferable configuration of a cell potential measurement apparatus using the above-configured integrated cell holding instrument 1 is shown in FIG. 9. The measurement apparatus of this embodiment comprises the above-mentioned integrated cell holding instrument 1, an optical observation means 20 including an inverted microscope 21 for optical observations of cells which are placed in this integrated cell holding instrument 1, a computer 30 including a means of providing a stimulation signal to the cells and a means of processing an output signal from the cells, and a cell culturing means 40 for maintaining a suitable culture medium for the cells.

[0044] Besides the inverted microscope 21 (for example, "IMT-2-F" or "IX70" manufactured by OLYMPUS OPTICAL CO., LTD.) where the integrated cell holding instrument 1 is installed, the optical observation means

20 also includes a SIT camera 22 used for a microscope (for example, "C2400-08" manufactured by HAMAMATSU PHOTONICS K.K.), a high-accurate display 23, and an image filing device 24 (for example, "TQ-2600" or "FTQ-3100" manufactured by MATSUSHITA ELECTRIC INDUSTRIAL CO., LTD.). A SIT camera is a general term used for cameras which apply a static induction transistor to an image pickup tube, a SIT camera being a representative example of sensitive cameras. However, the high-accuracy display 23 can be used also as a display for the computer 30. The specific devices described above in parenthesis are illustrative examples, and the invention is not limited to these devices only. This is also true for the examples shown in the following.

[0045] As for the computer 30, a personal computer (for example, compatible with WINDOWS) is used which is mounted with an A/D conversion board and software for measurement. The A/D conversion board includes an A/D converter 31 and a D/A converter 32 shown in FIG. 9. The A/D converter 31 has 16 bits and 64 channels, and the D/A converter 32 has 16 bits and 8 channels.

[0046] The measuring software includes software for determining conditions needed for providing a stimulation signal or recording conditions of an obtained detection signal. With the use of this type of software, the computer 30 is not only capable of structuring the means of providing a stimulation signal to the cells and the means of processing the detection signal from the cells, but also is capable of controlling the optical observation means (the SIT camera and the image filing device) or the cell culturing means.

[0047] In the following, particularly useful specifications for the software for measurement will be explained. On a computer screen directed to parameter setting, it is possible to determine complicated stimulation conditions by drawing a stimulation waveform on the screen using a keyboard or a mouse. Furthermore, recording conditions are determined such that 64 input channels, a sampling rate of 10 kHz, and continuous recording over several hours are enabled. In addition, the electrode which provides a stimulation signal or the electrode which draws out a detection signal from the cells can be specified by pointing to a microscope image displayed on the screen with a mouse or a pen. Besides, various conditions such as temperature or pH of the cell culturing means 40 can be determined by using the keyboard.

[0048] A recording screen displays a spontaneous action potential or an evoked potential detected from the cells in real-time at a maximum of 64 channels. Furthermore, the recorded spontaneous action potential or the evoked potential can be displayed on top of a microscope image of cells. When the evoked potential is measured, the whole recording waveform is displayed. When the spontaneous action potential is measured, the recording waveform is displayed only when an oc-

currence of spontaneous action is detected by a spike detection function using a window discriminator or a waveform discriminator. When the recording waveform is displayed, measurement parameters (e.g., stimulation conditions, recording conditions, temperature, pH) at the time of recording are simultaneously displayed in real-time. There is also an alarm function provided in case when a temperature or pH goes beyond permissive limits.

[0049] On a computer screen for data analysis, FFT analysis, coherence analysis, and correlation analysis can be conducted. In addition, this screen has other functions, such as a single spike separation function using a waveform discriminator, a temporal profile display function, a topography display function, an electric current source density analysis function. Results of these analyses can be displayed on top of the microscope image stored in the image filing device.

[0050] When a stimulation signal is output from the above-configured computer 30, this stimulation signal is forwarded by way of the D/A converter 32 and an isolator 33 (for example, "BSI-2" manufactured by BAK ELECTRONICS CO., LTD.) to the cells. In other words, the stimulation signal is applied between two points selected from the 64 microelectrodes 11 in the integrated cell holding instrument 1. Then, an evoked potential arising between each of the microelectrodes 11 and a GND level (potential of culture solution) is input to the computer 30 via 64 channels of a sensitive amplifier 34 (for example, "AB-610J" manufactured by NIHON KODEN CO., LTD.) and the A/D converter 31. The amplification factor of the amplifier 34 is 100 dB, and the frequency band is from 0 to 10 kHz. However, when an evoked potential by a stimulation signal is measured, the frequency band is determined to be from 100 Hz to 10 kHz using a low cut filter.

[0051] Next, the cell culturing means 40 is provided with a temperature adjuster 41, a circulation means 42 of culture solution and a means 43 for supplying a mixed gas of air and carbon dioxide. Actually, the cell culturing means 40 can be comprised of a product equivalent to a microincubator such as "PDMI-2" and a product equivalent to a temperature controller such as "TC-202" (both products manufactured by MEDICAL SYSTEMS CO., LTD.), and a CO₂ bomb, for example, is used. This microincubator can control the temperature in the range of 0 to 50°C by a Peltier element, and this microincubator is capable of handling a liquid delivery speed of below 3.0 ml/min and an air supply speed of below 1.0 l/min. Alternatively, a microincubator integrated with a temperature controller (for example, "IMT2-IBSV" manufactured by OLYMPUS OPTICAL CO., LTD.) may be used.

[0052] A preferable embodiment of the cell potential measurement apparatus of this invention was explained above. However, the cell potential measurement apparatus of this invention is not limited to this embodiment only and can be implemented for example, in various other forms described in the following.

[0053] Although a means for providing a stimulation signal to cells is comprised of a computer and a D/A converter in the above-mentioned embodiment, this means may be comprised of a general purpose or a special purpose pulse signal generator. Here, the stimulation signal is preferably determined as a bipolar constant voltage pulse comprising a pair of positive and negative pulses for eliminating artifacts, that is, for preventing DC components from flowing. In addition, it is preferable to convert it to a constant electric current pulse for preventing the electric current from flowing excessively. For example, the stimulation signal is preferably comprised of a positive pulse with a pulse width of 100 μ sec, an interval of 100 μ sec, and a negative pulse of 100 μ sec, and it is preferable that the peak electric current of the positive-negative pulse is in the range of 30 to 200 μ A.

[0054] Furthermore, the installation of the cell culturing means 40 in the measurement apparatus enables continuous measurement over a long period of time. Alternatively, it is also possible to configure the apparatus such that sample cells are placed in an integrated cell holding instrument and cultured inside an incubator which is provided separately from the measurement apparatus, and such that the integrated cell holding instrument is taken out only for a comparatively short-term measurement from the incubator to be installed in the measuring apparatus. In this case, the cell culturing means 40 is not necessarily provided in the measurement apparatus.

[0055] By using the above-mentioned cell potential measurement apparatus, nerve cells or organs were actually cultured on the integrated cell holding instrument and the potential change accompanied by activities of the nerve cells or nerve organs was measured. An example of this measurement will be explained hereafter. Cerebral cortex sections of rats were used as the nerve organs, which were cultured according to a method which will be described later on in an embodiment.

[0056] It will be first referred to results of comparing a voltage waveform measured by means of an integrated cell holding instrument of this invention and a voltage waveform measured by means of a conventional general purpose glass electrode (electrode used for measurement of extracellular potential). Nerve organs which were cultured for 14 days were used as the sample. A stimulation signal was applied between two adjacent electrodes of a planar electrode comprising the integrated cell holding instrument, and a waveform of evoked potential change over time which was induced at 8 electrodes close to the two electrodes was measured. For the purpose of comparison, glass electrodes were sequentially transferred to the vicinity of the above-mentioned eight electrodes by using a three-dimensional micromanipulator, and the same voltage waveform was measured.

[0057] As a result of comparing the voltage waveform measured by using a planar electrode (integrated cell holding instrument) and the waveform measured by us-

ing the glass electrode at eight parts, it was clear that both waveforms were very similar at all the parts. Representative examples of these waveforms are shown in FIG. 10 (A) and FIG. 10 (B). FIG. 10 (A) shows a waveform measured by a planar electrode, and FIG. 10 (B) shows a waveform measured by a glass electrode. When both waveforms are compared, it is clear that there is a slight difference in frequency characteristics. Compared with the measurement using a planar electrode, the measurement using a glass electrode shows a small damage sustained to the follow-up property upon a rapid potential change. This is considered to result from a capacitance difference between a glass electrode and a planar electrode.

[0058] Next, an experiment was conducted to examine the relationship between progressive days of nerve organs cultured on an integrated cell holding instrument and the potential distribution arising from cell activities. Prior to culturing the cells, the surface of a planar electrode was covered with collagen gel for the purpose of enhancing the adhesive property of each electrode in the planar electrode to the cells. In other words, collagen gel with a thickness of less than 50 μ m was formed on the surface of each electrode coated with platinum black and also on the surface of an insulation coating in the vicinity thereof as mentioned above. Then, on top of the collagen gel, and also where a microelectrode was present, a section of cerebral cortex of rats (thickness of less than 500 μ m) was placed and cultured. Measurement results of the spontaneous potential are shown in FIGS. 11 (A) to 11 (C), and measurement results of the evoked potential at the time when a stimulation signal is provided are shown in FIG. 12.

[0059] FIG. 11 (A) shows a microscopic image of the sample cells and the microelectrodes, and waveforms of the spontaneous potential measured at seven electrode parts indicated as 1 to 7 on this image are shown in FIG. 11 (B) and FIG. 11 (C). FIG. 11 (B) is a waveform measured on the sixth day after culture, and FIG. 11 (C) is a waveform measured on the tenth day after culture. The scale of the microscopic image, time of the measurement waveforms, and the scale of the voltage are indicated in the figure. According to the measurement results, it is confirmed, for example, that on the sixth day after culture, the spontaneous activities of the cells measured at each electrode are weak, and synchronic properties of the electrodes to each other can be hardly observed, whereas on the tenth day after culture, a large number of nerve cells become active simultaneously, indicating that the synchronic properties of the electrodes to each other increased.

[0060] FIG. 12 (A) also shows a microscopic view of the sample cells and the microelectrodes. Image processing, which is included in the software for measurement in the above-mentioned computer, was applied to draw an outline of the cells and positions of each electrode from the microscopic image onto the screen. Furthermore, the voltage waveform measured at each elec-

trode was displayed thereon, as shown in FIG. 12 (B) and FIG. 12 (C). FIG. 12 (B) shows a distribution of the evoked potential on the fifth day after culture, and FIG. 12 (C) shows the same on the tenth day after culture. A pair of electrodes indicated on the upper right side with a + and - sign are electrodes applied with a stimulation signal. Right above a small square sign showing the position of each electrode, a waveform measured by this electrode is displayed. In these waveforms, a part where a large vertical swing is observed on the left end is an artifact corresponding directly to the stimulation signal, and the potential change after the artifact indicates actual cell activities. As a result of these measurements, it is confirmed, for example, that on the fifth day after culture, the cell activities are limited to a place which is comparatively close to the electrode positions applied with the stimulation signal, but on the tenth day after culture, the cell activities can be observed in a wide range and their scale (amplitude) becomes larger.

[0061] Next, examples of a suitable culture method for cerebral cortex slices will be explained.

1) Culture medium

[0062] The following additives were added to a culture medium in which Dulbecco modified Eagle's medium and HamF-12 medium were mixed in a volume ratio of 1:1 (media manufactured by GIBCO CO., LTD. 430-2500EB).

- * glucose, GIBCO CO., LTD. 820-5023IN, 2.85 mg/L (totalling to 6 mg/L together with glucose contained originally in the above-mentioned culture medium)
- * putrescine, SIGMA CO., LTD. P5780, 100 μ M
- * progesterone, SIGMA CO., LTD. P8783, 20 nM
- * hydrocortisone, SIGMA CO., LTD. H0888, 20 nM
- * sodium selenite, WAKO CO., LTD. 198-0319, 20 nM
- * insulin, SIGMA CO., LTD. I6634, 5 mg/L
- * transferrin, SIGMA CO., LTD. TI47, 100 mg/L
- * sodium bicarbonate, SIGMA CO., LTD. 2.438 g/L
- * addition of a suitable amount of IN HCl or IN NaOH to adjust to pH 7.4

[0063] After the above-mentioned additives were added, filtration and sterilization were conducted, and the culture medium was preserved at 4°C and ready to be used. This culture medium is hereinafter simply called "culture medium".

2) Structure of a well on a planar electrode

[0064] For the convenience of culturing nerve cells or nerve organs on a planar electrode, a polystyrene cylinder having an inner diameter of 22 mm, an outer diameter of 26 mm, and a height of 8 mm was adhered in the following steps.

- (a) On the bottom face of a polystyrene cylinder (in-

ner diameter 22 mm, outer diameter 26 mm, height 8 mm), a sufficient amount of a liquid silicon adhesive (DOW CORNING CO., LTD. 891 or SHIN-ET-SU CHEMICAL CO., LTD. KE-42RTV) was applied.

(b) The center of a glass substrate in the planar electrode and the center of the polystyrene cylinder were carefully matched and then adhered in this state.

(c) By leaving it in an environment in which dust hardly enters for 24 hours, the adhesive was solidified.

(d) After dipping in 70 % ethanol for 5 minutes, sterilization was conducted by air-drying inside a clean bench, after which the structure is then ready for processing the electrode surface.

3) Processing of the electrode surface

[0065] In order to enhance cell adhesive property on the surface of a planar electrode, collagen gel was formed on the surface of the electrode by the following method. All of these operations were conducted in a sterilized atmosphere.

(a) Solutions A, B, and C were prepared and iced.

A. 0.3 vol.% diluted hydrochloric acid collagen solution (pH 3.0, NITTA GELATIN CO., LTD. Cellmatrix Type I-A)

B. Solution comprising a mixture medium of Dulbecco modified Eagle's medium and HamF-12 medium mixed in a volume ratio of 1:1 (GIBCO CO., LTD. 430-2500EB), which is not provided with sodium bicarbonate and is made with a concentration 10 times higher than for an ordinary use, and then filtration and sterilization were conducted thereto.

C. 2.2 g of sodium bicarbonate and 4.77 g of HEPES (manufactured by GIBCO CO., LTD. 845-1344 IM) were dissolved in 100 mL of 0.05 N sodium hydroxide solution, and filtration and sterilization were conducted thereto.

(b) While cooling, the solutions A, B, and C were mixed at a volume ratio of 8:1:1. At this time, A and B were first mixed thoroughly and C was added afterwards to be mixed.

(c) In a well of a planar electrode which was cooled in advance to about 4°C, 1 mL of the mixed solution of (b) was injected little by little. After the entire electrode surface was covered, the mixed solution was removed as much as possible with a glass Pasteur pipette. Through this operation, a coating of the mixed solution was formed on the electrode surface with a thickness of less than 50µm.

(d) By heating the planar electrode covered with the mixed solution coating at 37°C for 30 minutes, gelatinization of the mixed solution took place, and a

collagen gel matrix was formed.

(e) 1 mL of sterilized water was added into the well of the planar electrode, and about 5 minutes thereafter, the water was removed, thereby washing.

(f) The operation of Step (e) was repeated two more times (a total of 3 times).

(g) 1 mL of the culture medium (excluding insulin and transferrin) was injected little by little into the well of the planar electrode, and preserved inside a CO₂ incubator under the conditions of temperature 37°C, relative humidity 97% and higher, CO₂ concentration 5%, and air concentration 95%, which was then ready for use.

4) Culture of nerve cells or nerve organs

[0066] Generally speaking, culture forms can be divided into two types. That is, a dissociated cell culture of nerve cells and an organotypic slice culture of a nerve organ. Each form will be explained in the following.

4-1) Dissociated culture of cerebral visual cortex nerve cells of rats

[0067] The following operations were all performed in a sterilized atmosphere.

(a) Brains of fetuses of SD rats at 16-18 days of pregnancy were removed and immersed in iced Hanks' Balanced Salt Solution (manufactured by GIBCO CO., LTD. 450-1250EB).

(b) From the brains in the iced Hanks' Balanced Salt Solution, visual cortices were cut out and transferred to minimum essential medium liquid (manufactured by GIBCO CO., LTD. 410-1100EB).

(c) In the minimum essential medium liquid, the visual cortices were cut into as small pieces as possible, 0.2 mm square at maximum.

(d) The visual cortices cut into small pieces were placed in test tubes for centrifugal separation, and after washing with Hanks' Balanced Salt Solution free from calcium and magnesium three times, they were dispersed in a suitable volume of the same liquid.

(e) In the test tubes for centrifugal separation of Step (d), Hanks' Balanced Salt Solution free from calcium and magnesium with trypsin dissolved at 0.25 % was added to double the total volume. With gentle stirring, enzymatic processes were allowed to take place while the solution was constantly kept at 37 °C for 15 minutes.

(f) To the culture medium shown in 1) (containing additives, hereinafter abbreviated as a culture medium), 10 vol.% of fetal calf serum was added, which is then placed in the test tubes for centrifugal separation subjected to Step (e) to further double the total volume. With a glass Pasteur pipette having a reduced diameter produced by fire-polishing

the tip end with a burner, gently repeating pipetting (about 20 times at maximum), the cells were unravelled.

(g) Centrifugation was carried out for 5 minutes at 9806.65 m/sec² (that is, 1000 g). Upon completion of centrifugation, the supernatant was discarded and the precipitate was suspended in the culture medium containing 5 vol.% of fetal cow serum.

(h) Step (g) was repeated two more times (a total of 3 times).

(i) The precipitate finally obtained was suspended in the culture medium containing 5 vol.% fetal cow serum, and using an erythrocytometer, the cell concentration in the suspension liquid was measured. After the measurement, using a similar culture medium, the cell concentration was adjusted to be 2 to 4 x 10⁶ cells/ml.

(j) A planar electrode which was preserved in a CO₂ incubator after subjected to the process of above steps 1-3) was taken out, the culture medium (free from insulin and transferrin) inside the well was removed, and 500μL of a culture medium containing 5 % of fetal cow serum was newly injected little by little. Furthermore, 100μL of the cell suspension liquid with the cell concentration adjusted according to Step (i) was gently added and again let stand in the CO₂ incubator.

(k) Three days after the performance of Step (j), one half the culture medium was replaced with a new one. For the replaced medium, the culture medium not containing fetal calf serum was used. By reducing the concentration of fetal calf serum, growth of cells other than nerve cells (for example, glial cells) can be suppressed.

(l) Thereafter, half of the medium was replaced in a similar manner every 1 to 2 days.

4-2) Culture method of a cerebral cortex section of rats

[0068]

(a) Brains of SD rats 2 days old were removed and immersed in iced Hanks' Balanced Salt Solution containing 0.25 vol.% of D-glucose.

(b) In the iced Hanks' Balanced Salt Solution containing 0.25 vol.% of D-glucose, cerebral meninges attached on the brain were removed using a sharp-edged pincette very carefully not to damage the cerebral cortex.

(c) About 500μm away from a callous body, a hemisphere of the cerebral cortex without the cerebral meninges was cut from the occipital lobe side to the frontal lobe side along the callous body by means of microscissors used for surgical operations of eyes.

(d) Subsequently, using the microscissors used for surgical operations of eyes, a cerebral cortex was cut out vertically to the cross-section of Step (c) with

a thickness of 200 to 300μm to create a section.

(e) The microscissors used for surgical operations of eyes was used further to adjust a size of the section to be about 1 x 1 mm.

(f) The planar electrode prepared in the above-mentioned "3) Processing of an electrode surface" was taken out from the CO₂ incubator, and the cerebral cortex section whose size was adjusted was sucked up with a pipette having a diameter of 2 mm and larger very gently not to damage the section, and then transferred into a culture well of the planar electrode.

(g) With a Pasteur pipette with the tip end fire-polished with a burner, the material was arranged on the electrode such that the layer structure of the cortex faces upward and is placed on the electrode, while being careful not to damage the cerebral cortex section.

(h) After the cerebral cortex section was placed on the planar electrode, the amount of the culture medium was adjusted so that a base of the section touched the culture medium and the top face was exposed to outside air.

(i) After adjusting the culture medium amount, the planar electrode was placed in a sterilized Petri dish, and about 5 ml of sterilized water at 37°C was injected little by little into the Petri dish to prevent the culture medium from drying, and again let stand in the CO₂ incubator.

(j) Thereafter, the medium was replaced with a new one once every day while attending to the amount of culture medium. The culture medium amount was determined to be the same as in Step (h).

Claims

1. A cell potential measurement apparatus for measurement of electric physiological characteristics of cells, comprising:

(A) an integrated cell holding instrument (1) provided with a plurality of microelectrodes (11) on a substrate plate (2), a cell holding part (6) for placing cells thereon, and an electric connection means (3, 4, 5) for providing an electric signal to said microelectrodes and for leading out an electric signal from said microelectrodes;

(B) a stimulation signal supply means (30, 32, 33) to be connected to the electric connection means of said integrated cell holding instrument (1) for providing electric stimulation to said cells; and

(C) a signal processing means (30, 31, 34) to be connected to the electric connection means

- of said integrated cell holding instrument for processing an output signal arising from electric physiological activities of said cells, wherein said electric connection means includes a half-split holder (3, 4) which has a contact (9) touching an electric contact point (7) due to elastic deformation and fixes said substrate plate (2) by holding the plate at the top and bottom of the plate.
2. The cell potential measurement apparatus as in claim 1, further comprising an optical observation means (20) for observing the cells optically.
 3. The apparatus as in claim 1 or 2, further comprising a cell culturing means (40) for maintaining an environment for culturing cells which are placed on said integrated cell holding instrument (1).
 4. The cell potential measurement apparatus as in claim 3, wherein the cell culturing means (40) comprises a temperature adjustment means (41) for maintaining a constant temperature, a means (42) for circulating a culture solution, and a means (43) for supplying a mixed gas of air and carbon dioxide.
 5. The apparatus as in any one of claims 1 to 4, wherein said integrated cell holding instrument (1) comprises a plurality of microelectrodes (11) arranged in a matrix form on the surface of a glass plate (13), conductive patterns (12) for drawing the microelectrodes, electric contact points (7) which are connected to edge parts of these conductive patterns (12), and an insulation coating (14) covering the surface of said conductive patterns (12), said cell holding part (6) being disposed in an area including said plurality of microelectrodes (11).
 6. The apparatus as in any one of claims 1 to 5, wherein said plurality of microelectrodes (11) comprise 64 electrodes arranged in 8 columns and 8 rows.
 7. The apparatus as in any one of claims 1 to 6, wherein said microelectrodes (11) each have an electrode area of $4 \times 10^2 \mu\text{m}^2$ to $4 \times 10^4 \mu\text{m}^2$.
 8. The cell potential measurement apparatus as in any one of claims 1 to 7, wherein said electric connection means fixes said half-split holder (3, 4), and further comprises a printed circuit board (5) having an outside connection pattern which is connected to the contact of said holder via a connector.
 9. The apparatus as in any one of claims 1 to 8, wherein the contact resistance of said electric contact point (7) with said contact (9) and the contact resistance of said contact (9) with said connector (5) are both less than 30 m ohm.
 10. The apparatus as in any one of claims 1 to 9, wherein said optical observation means (20) comprises an optical microscope (22), and an image pick-up device and an image display device (23) connected to the optical microscope.
 11. The cell potential measurement apparatus as in claim 10, wherein said optical observation means further comprises an image storage device (24).
 12. The apparatus as in any one of claims 1 to 11, wherein said stimulation signal supply means (30) comprises a pulse signal generator.
 13. The apparatus as in any one of claims 1 to 12, wherein said signal processing means (30) comprises a multi-channel amplifier (34) which amplifies a detection signal arising from cell activities and a multi-channel display device which displays an amplified signal waveform in real-time.
 14. The apparatus as in any one of claims 1 to 13, further comprising a computer (30) which outputs said stimulation signal via a D/A converter (32), and receives and processes an output signal arising from electric physiological activities of said cells via an A/D converter (31), said computer (30) controlling said optical observation means (20) and said cell culturing means (40).

Patentansprüche

1. Zellpotentialmeßvorrichtung zur Messung elektro-physiologischer Kennwerte von Zellen mit:
 - (A) einem integrierten Zellhalteinstrument (1), versehen mit mehreren Mikroelektroden (11) auf einer Substratplatte (2), einem Zellhalteteil (6) zum Plazieren von Zellen darauf und einer elektrischen Verbindungseinrichtung (3, 4, 5) zum Zuführen eines elektrischen Signals zu den Mikroelektroden und zum Herausführen eines elektrischen Signals von den Mikroelektroden;
 - (B) einer Stimulationssignal-Zufuhreinrichtung (30, 32, 33), die mit der elektrischen Verbindungseinrichtung des integrierten Zellhalteinstruments (1) zu verbinden ist, zum elektrischen Stimulieren der Zellen; und
 - (C) einer Signalverarbeitungseinrichtung (30, 31, 34), die mit der elektrischen Verbindungseinrichtung des integrierten Zellhalteinstruments zu verbinden ist, zum Verarbeiten eines Ausgangssignals als Ergebnis elektrophysiologischer Aktivitäten der Zellen, wobei die elektrische Verbindungseinrichtung einen geteilten Halter (3, 4) aufweist, der einen Kontakt (9) hat,

der einen elektrischen Kontaktpunkt (7) infolge von elastischer Verformung berührt, und die Substratplatte (2) durch Halten der Platte an der Plattenoberseite und -unterseite fixiert.

2. Zellpotentialmeßvorrichtung nach Anspruch 1, ferner mit einer optischen Beobachtungseinrichtung (20) zum optischen Beobachten der Zellen.
3. Vorrichtung nach Anspruch 1 oder 2, ferner mit einer Zellkultivierungseinrichtung (40) zum Aufrechterhalten einer Umgebung zum Kultivieren von Zellen, die auf dem integrierten Zellhalteinstrument (1) plaziert sind.
4. Zellpotentialmeßvorrichtung nach Anspruch 3, wobei die Zellkultivierungseinrichtung (40) aufweist: eine Temperatureinstelleinrichtung (41) zum Aufrechterhalten einer konstanten Temperatur, eine Einrichtung (42) zum Zirkulierenlassen einer Kulturlösung und eine Einrichtung (43) zum Zuführen eines Mischgases aus Luft und Kohlendioxid.
5. Vorrichtung nach einem der Ansprüche 1 bis 4, wobei das integrierte Zellhalteinstrument (1) aufweist: mehrere Mikroelektroden (11), die in Matrixform auf der Oberfläche einer Glasplatte (13) angeordnet sind, Leitmuster (12) zum Herausführen der Mikroelektroden, elektrische Kontaktpunkte (7), die mit Kantenteilen dieser Leitmuster (12) verbunden sind, und eine Isolierbeschichtung (14), die die Oberfläche der Leitmuster (12) abdeckt, wobei das Zellhalteteil (6) in einem Bereich angeordnet ist, der die mehreren Mikroelektroden (11) aufweist.
6. Vorrichtung nach einem der Ansprüche 1 bis 5, wobei die mehreren Mikroelektroden (11) 64 Mikroelektroden aufweisen, die in 8 Spalten und 8 Reihen angeordnet sind.
7. Vorrichtung nach einem der Ansprüche 1 bis 6, wobei die Mikroelektroden (11) jeweils eine Elektrodenfläche von $4 \times 10^2 \mu\text{m}^2$ bis $4 \times 10^4 \mu\text{m}^2$ haben.
8. Zellpotentialmeßvorrichtung nach einem der Ansprüche 1 bis 7, wobei die elektrische Verbindungseinrichtung den geteilten Halter (3, 4) fixiert und ferner eine Leiterplatte (5) mit einem Außenverbindungsmuster aufweist, das mit dem Kontakt des Halters über einen Verbinder verbunden ist.
9. Vorrichtung nach einem der Ansprüche 1 bis 8, wobei der Kontaktwiderstand des elektrischen Kontaktpunkts (7) mit dem Kontakt (9) und der Kontaktwiderstand des Kontakts (9) mit dem Verbinder (5) beide unter $30 \text{ m}\Omega$ liegen.
10. Vorrichtung nach einem der Ansprüche 1 bis 9, wo-

bei die optische Beobachtungseinrichtung (20) aufweist: ein optisches Mikroskop (22) sowie ein Bildaufnahmegerät und ein Bildanzeigergerät (23), die mit dem optischen Mikroskop verbunden sind.

11. Zellpotentialmeßvorrichtung nach Anspruch 10, wobei die optische Beobachtungseinrichtung ferner ein Bildspeichergerät (24) aufweist.
12. Vorrichtung nach einem der Ansprüche 1 bis 11, wobei die Stimulationssignal-Zufuhreinrichtung (30) einen Impulssignalgenerator aufweist.
13. Vorrichtung nach einem der Ansprüche 1 bis 12, wobei die Signalverarbeitungseinrichtung (30) aufweist: einen Mehrkanalverstärker (34), der ein Detektionssignal als Ergebnis von Zellaktivitäten verstärkt, und ein Mehrkanal-Anzeigergerät, das eine verstärkte Signalwellenform in Echtzeit anzeigt.
14. Vorrichtung nach einem der Ansprüche 1 bis 13, ferner mit einem Rechner (30), der das Stimulationssignal über einen D/A-Wandler (32) ausgibt sowie ein Ausgangssignal als Ergebnis elektrophysiologischer Aktivitäten der Zellen über einen A/D-Wandler (31) empfängt und verarbeitet, wobei der Rechner (30) die optische Beobachtungseinrichtung (20) und die Zellkultivierungseinrichtung (40) steuert.

Revendications

1. Appareil de mesure du potentiel cellulaire destiné à la mesure de caractéristiques physiologiques électriques de cellules, comprenant :
 - (A) un instrument intégré de maintien de cellules (1) muni d'une pluralité de microélectrodes (11) sur une plaque de substrat (2), d'une partie de maintien de cellules (6) destinée à placer des cellules sur celle-ci, et d'un moyen de connexion électrique (3, 4, 5) destiné à fournir un signal électrique auxdites microélectrodes et à conduire à l'extérieur un signal électrique provenant desdites microélectrodes,
 - (B) un moyen d'application de signal de stimulation (30, 32, 33) destiné à être relié au moyen de connexion électrique dudit instrument intégré de maintien de cellules (1), destiné à fournir une stimulation électrique auxdites cellules, et
 - (C) un moyen de traitement de signal (30, 31, 34) devant être relié au moyen de connexion électrique dudit instrument intégré de maintien de cellules, destiné à traiter un signal de sortie provenant d'activités physiologiques électriques desdites cellules, dans lequel ledit moyen de connexion électrique comprend un support séparé en deux (3, 4) qui comprend un contact

- (9) touchant un point de contact électrique (7) en raison d'une déformation élastique et qui fixe ladite plaque de substrat (2) en maintenant la plaque au niveau du haut et du bas de la plaque.
2. Appareil de mesure de potentiel cellulaire selon la revendication 1, comprenant en outre un moyen d'observation optique (20) destiné à observer optiquement les cellules.
3. Appareil selon la revendication 1 ou 2, comprenant en outre un moyen de culture de cellules (40) destiné à maintenir un environnement en vue de cultiver les cellules qui sont placées sur ledit instrument intégré de maintien de cellules (1).
4. Appareil de mesure de potentiel cellulaire selon la revendication 3, dans lequel le moyen de culture de cellules (40) comprend un moyen d'ajustement de température (41) destiné à maintenir une température constante, un moyen (42) destiné à faire circuler une solution de culture et un moyen (43) destiné à fournir un gaz mixte d'air et de dioxyde de carbone.
5. Appareil selon l'une quelconque des revendications 1 à 4, dans lequel ledit instrument intégré de maintien de cellules (1) comprend une pluralité de microélectrodes (11) disposées suivant une forme de matrice sur la surface d'une plaque de verre (13), des motifs conducteurs (12) destinés à dessiner les microélectrodes, des points de contact électriques (7) qui sont reliés aux parties de bord de ces motifs conducteurs (12), et un revêtement d'isolement (14) recouvrant la surface desdits motifs conducteurs (12), ladite partie de maintien de cellules (6) étant disposée dans une zone comprenant ladite pluralité de microélectrodes (11).
6. Appareil selon l'une quelconque des revendications 1 à 5, dans lequel ladite pluralité de microélectrodes (11) comprend 64 électrodes disposées en 8 colonnes et 8 rangées.
7. Appareil selon l'une quelconque des revendications 1 à 6, dans lequel lesdites microélectrodes (11) présentent chacune une surface d'électrode de $4 \times 10^2 \mu\text{m}^2$ à $4 \times 10^4 \mu\text{m}^2$.
8. Appareil de mesure de potentiel cellulaire selon l'une quelconque des revendications 1 à 7, dans lequel ledit moyen de connexion électrique fixe ledit support séparé en deux (3, 4) et comprend en outre une carte à circuit imprimé (5) comportant un motif de connexion extérieur qui est connecté au contact dudit support par l'intermédiaire d'un connecteur.
9. Appareil selon l'une quelconque des revendications 1 à 8, dans lequel la résistance de contact dudit point de contact électrique (7) avec ledit contact (9) et la résistance de contact dudit contact (9) avec ledit connecteur (5) sont toutes les deux inférieures à 30 milliohms.
10. Appareil selon l'une quelconque des revendications 1 à 9, dans lequel ledit moyen d'observation optique (20) comprend un microscope optique (22), et un dispositif de saisie d'image ainsi qu'un dispositif d'affichage d'image (23) reliés au microscope optique.
11. Appareil de mesure de potentiel cellulaire selon la revendication 10, dans lequel ledit moyen d'observation optique comprend en outre un dispositif de mémorisation d'image (24).
12. Appareil selon l'une quelconque des revendications 1 à 11, dans lequel ledit moyen d'application de signal de stimulation (30) comprend un générateur de signal d'impulsion.
13. Appareil selon l'une quelconque des revendications 1 à 12, dans lequel ledit moyen de traitement de signal (30) comprend un amplificateur à plusieurs canaux (34) qui amplifie un signal de détection provenant d'activités des cellules et un dispositif d'affichage à plusieurs canaux qui affiche une forme d'onde de signal amplifiée en temps réel.
14. Appareil selon l'une quelconque des revendications 1 à 13, comprenant en outre un ordinateur (30) qui fournit en sortie ledit signal de stimulation par l'intermédiaire d'un convertisseur numérique vers analogique (N/A) (32), et reçoit et traite un signal de sortie provenant d'activités physiologiques électriques desdites cellules par l'intermédiaire d'un convertisseur analogique vers numérique (A/N) (31), ledit ordinateur (30) commandant ledit moyen d'observation optique (20) et ledit moyen de culture de cellules (40).

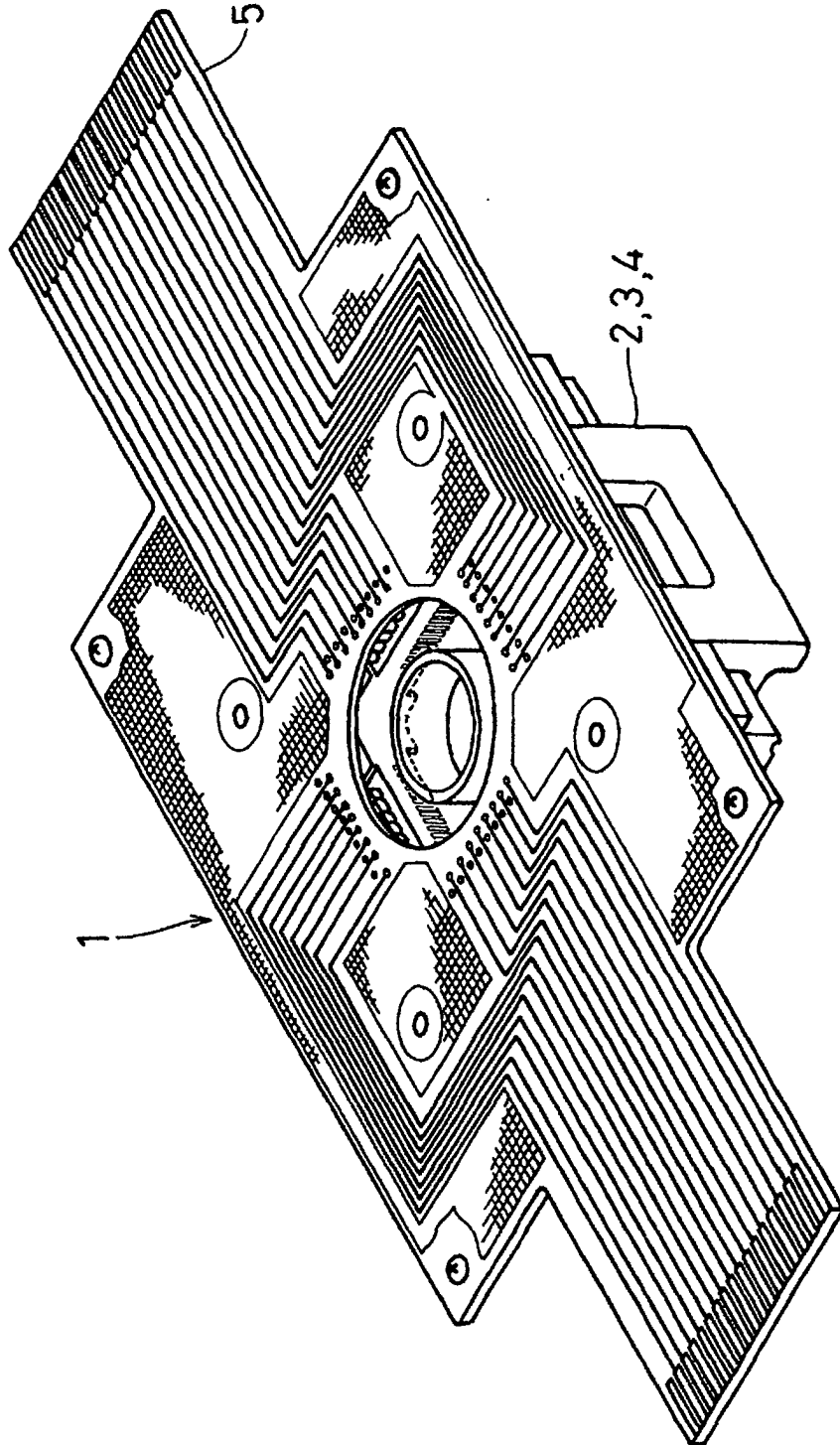
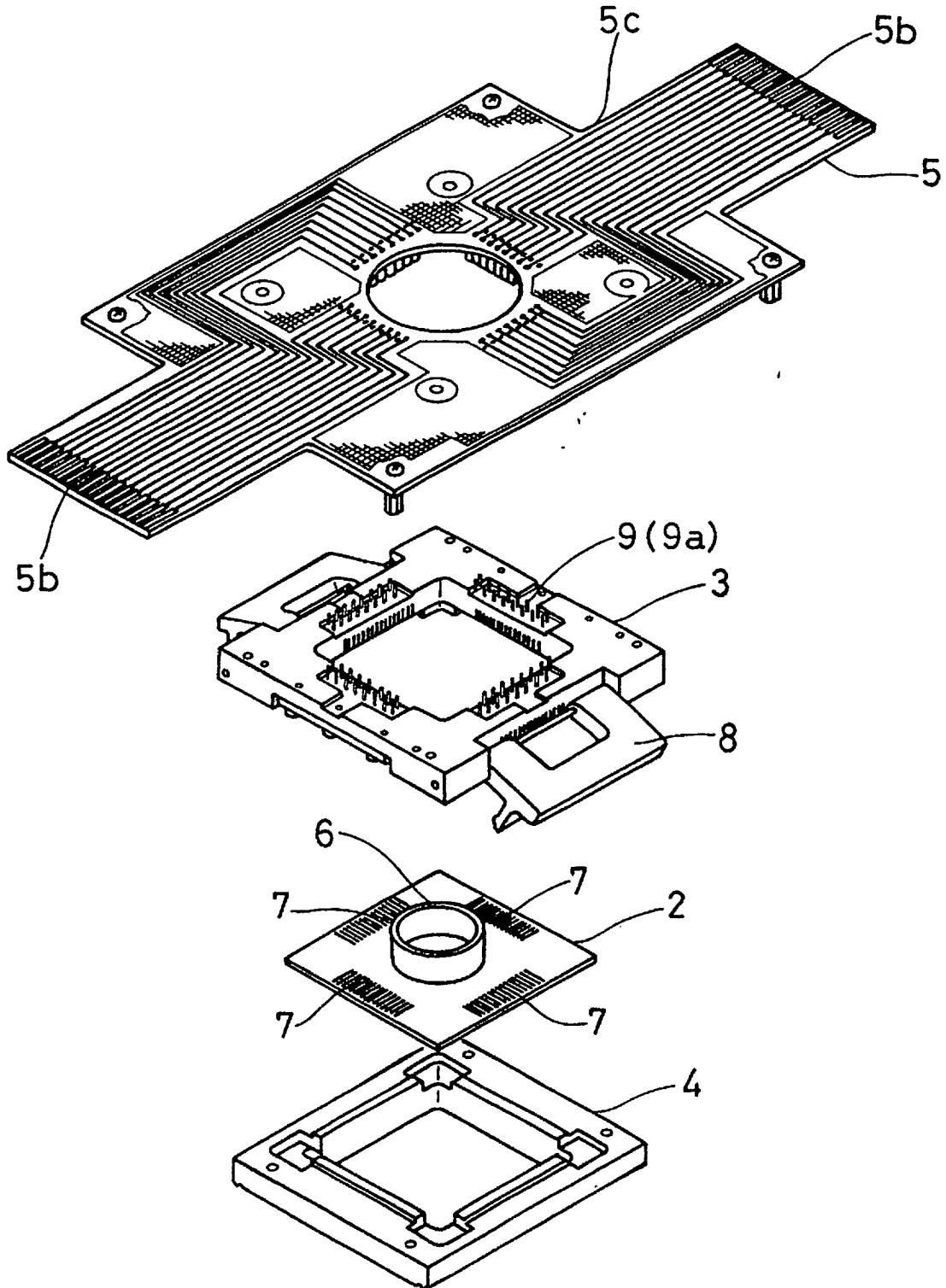


FIG. 1

FIG. 2



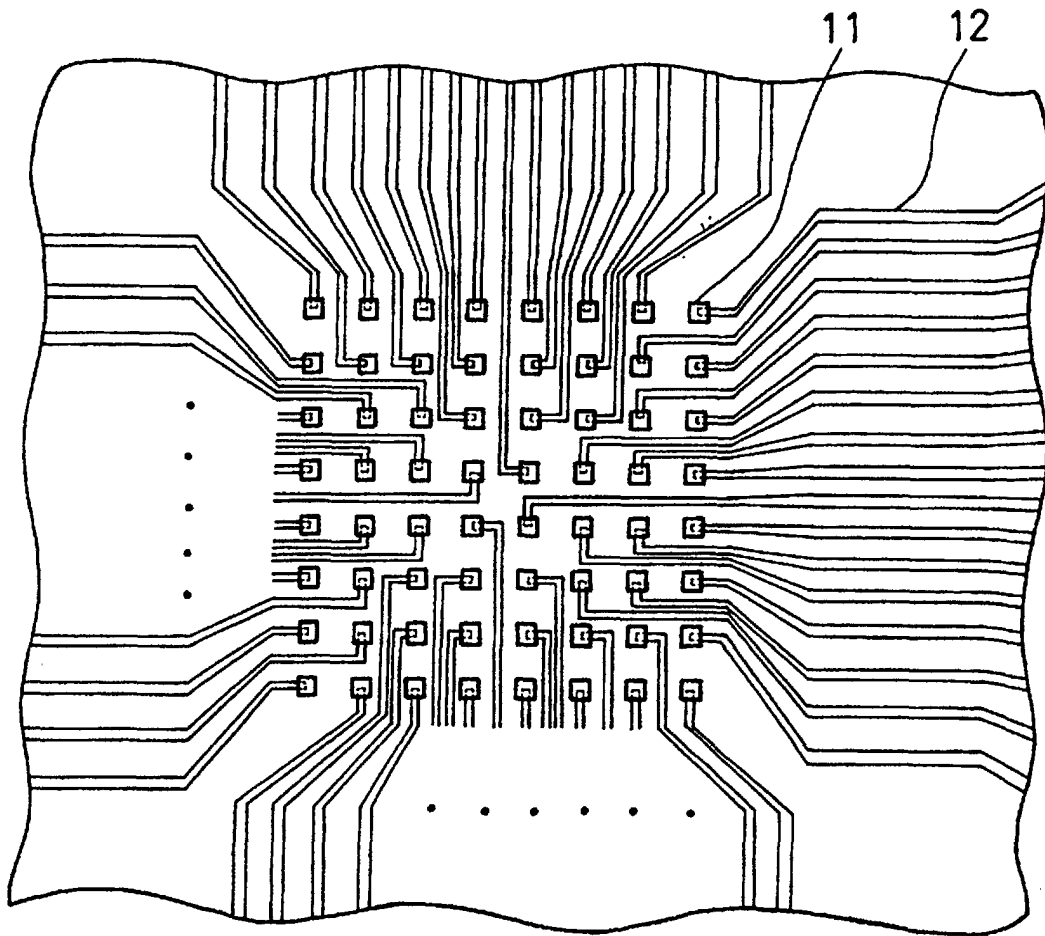


FIG. 3

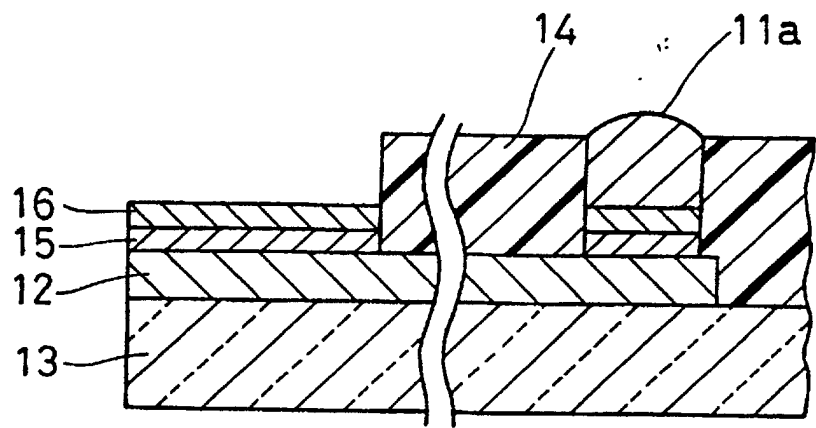


FIG. 4

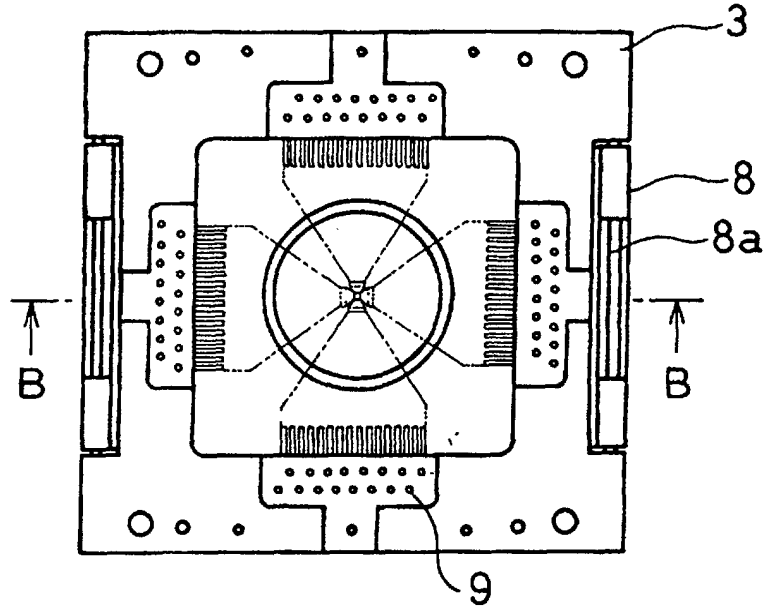


FIG. 5 (A)

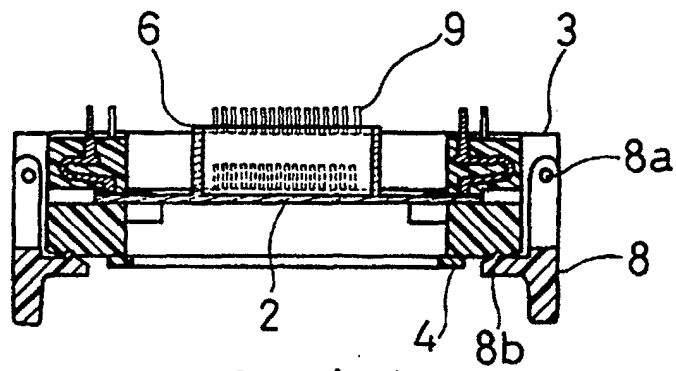


FIG. 5 (B)

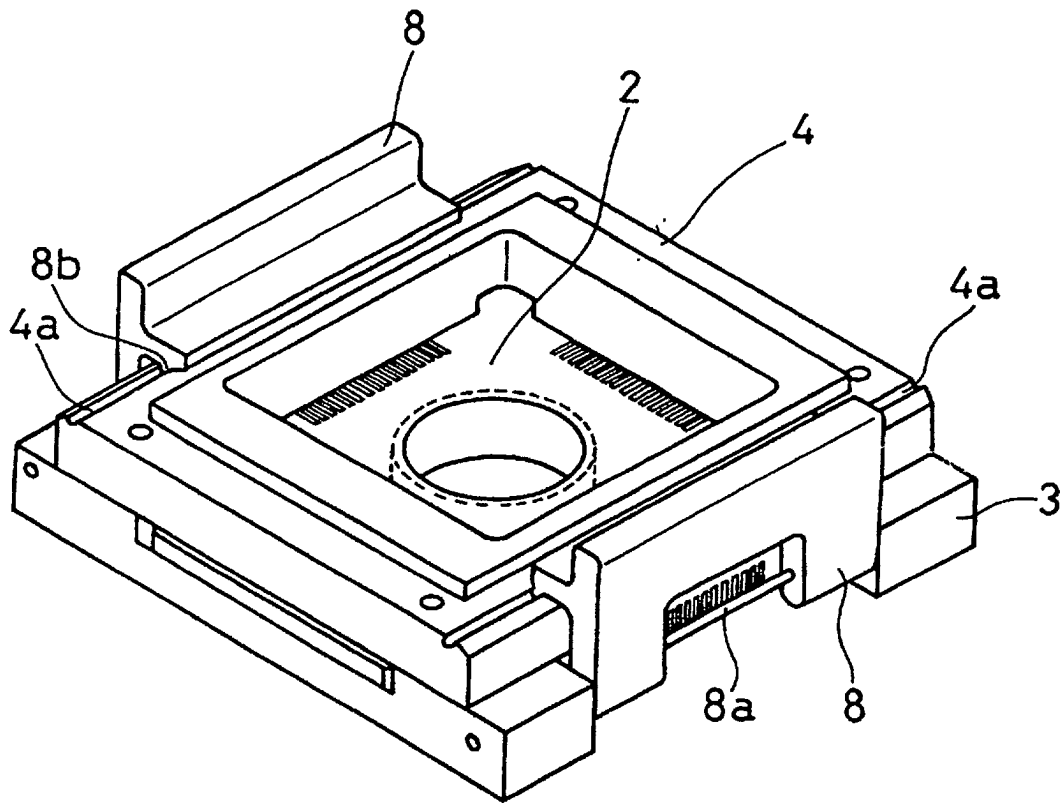


FIG. 6

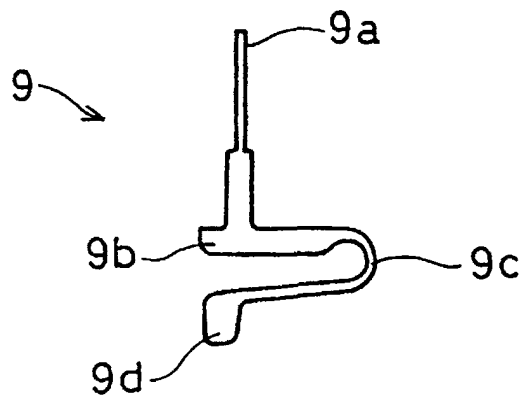
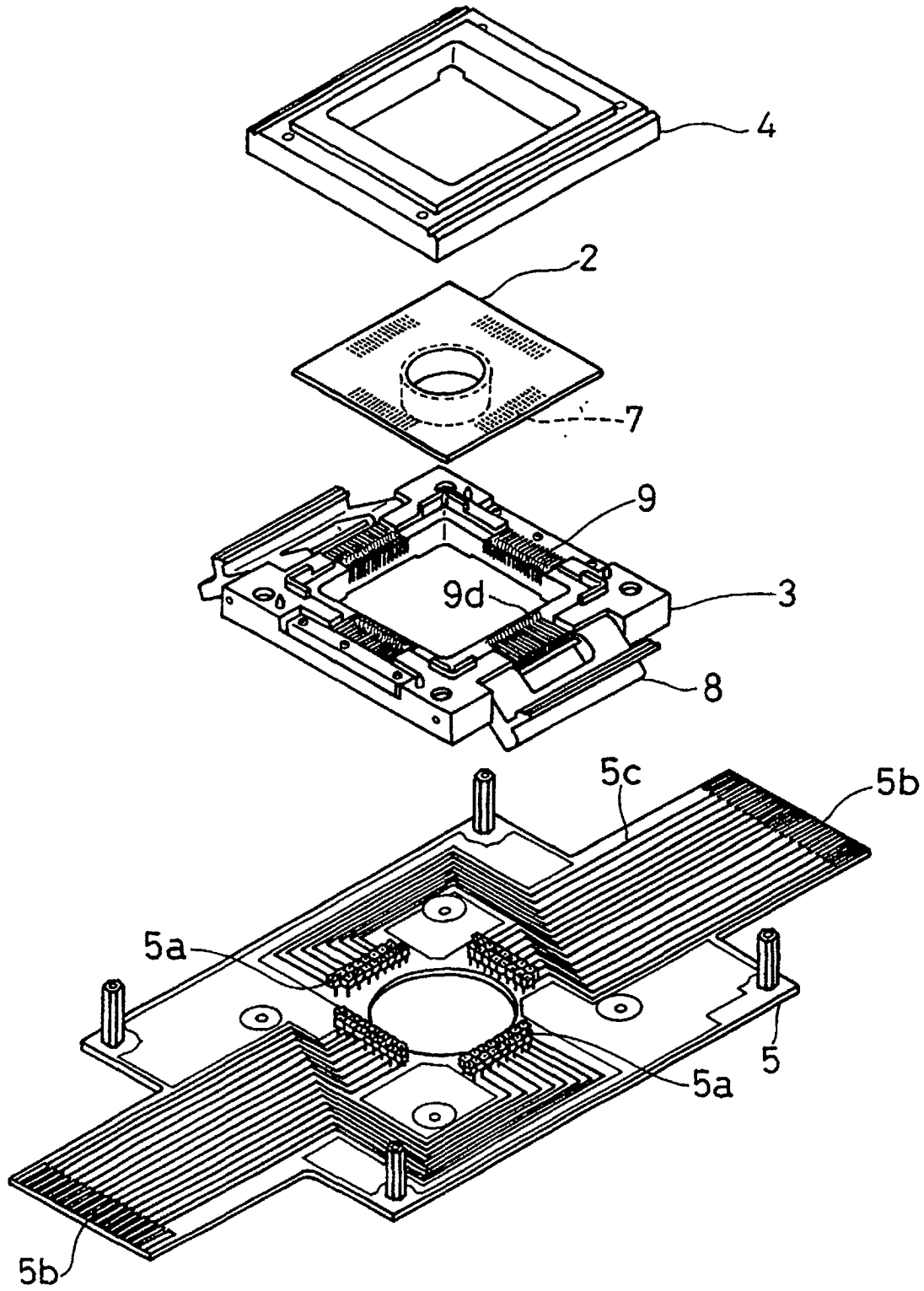


FIG. 7

FIG. 8



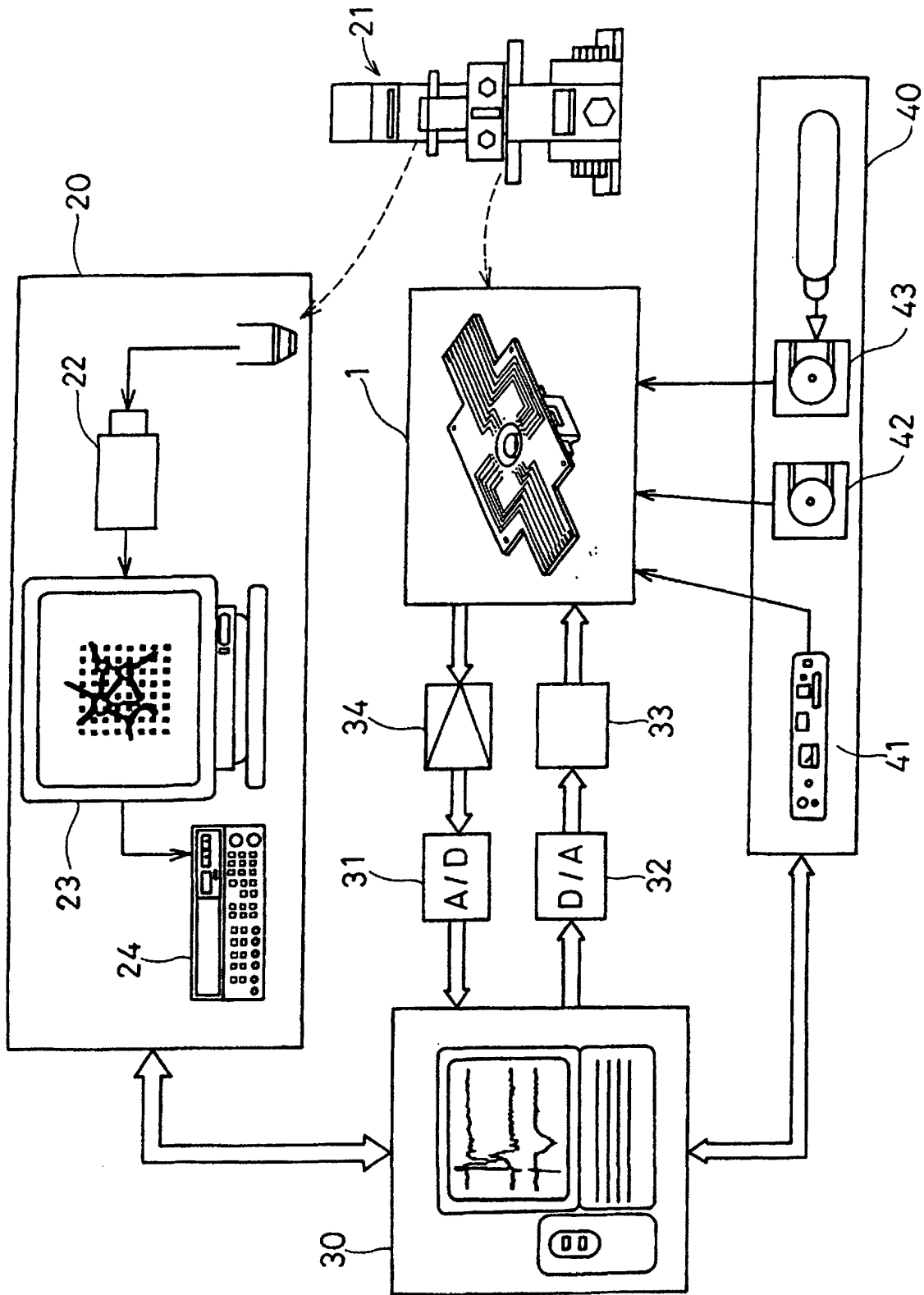


FIG. 9

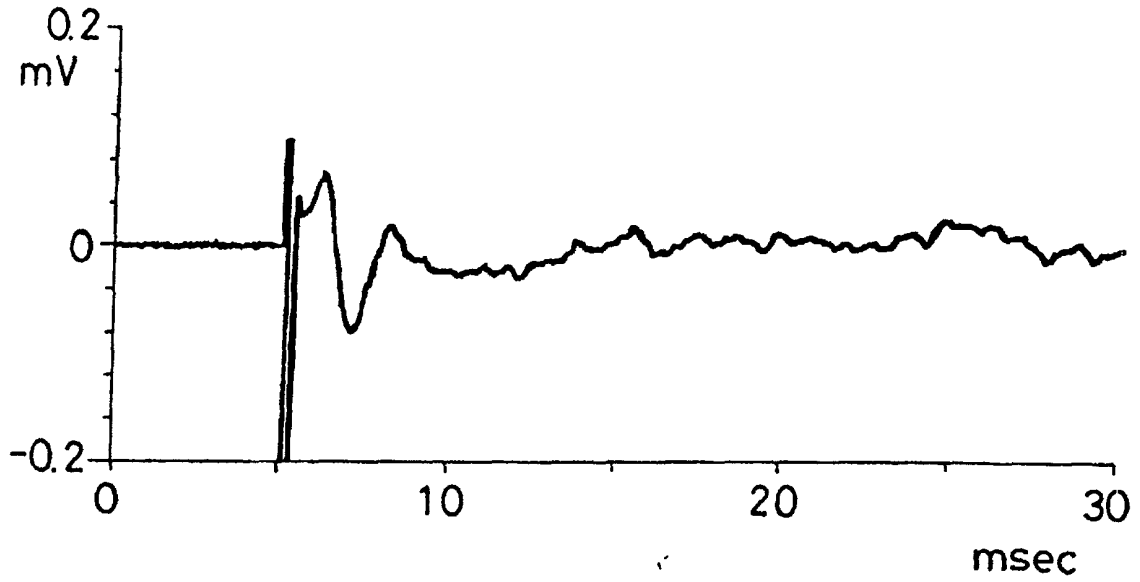


FIG.10 (A)

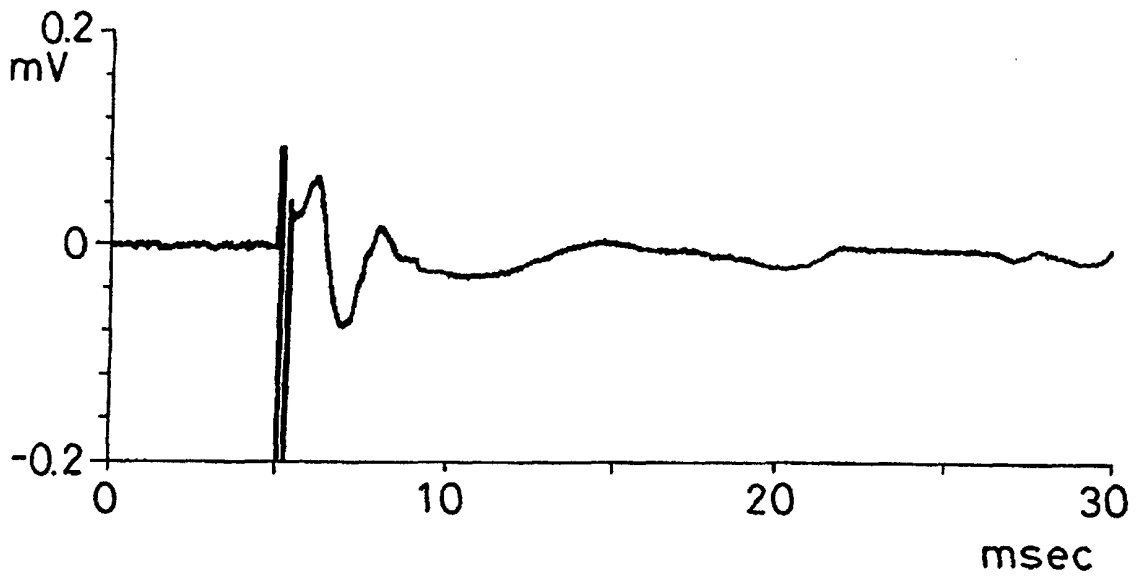


FIG.10(B)

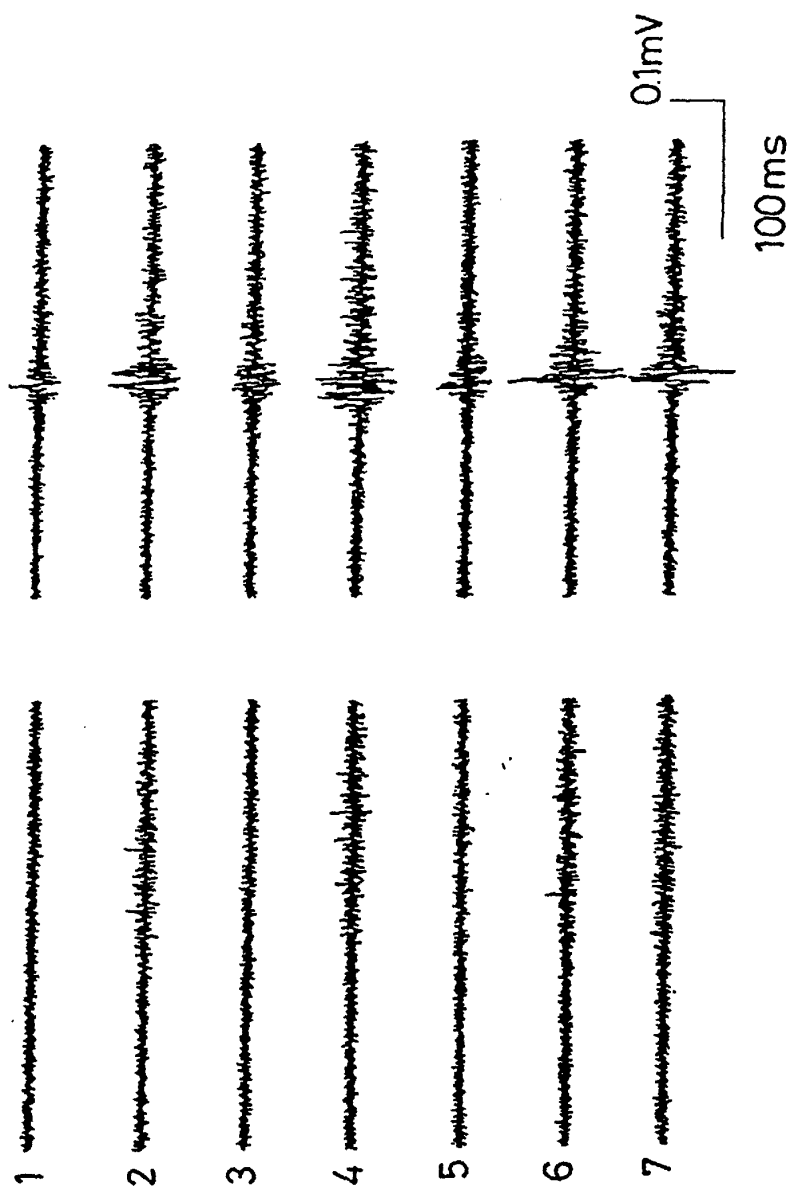


FIG.11(C)

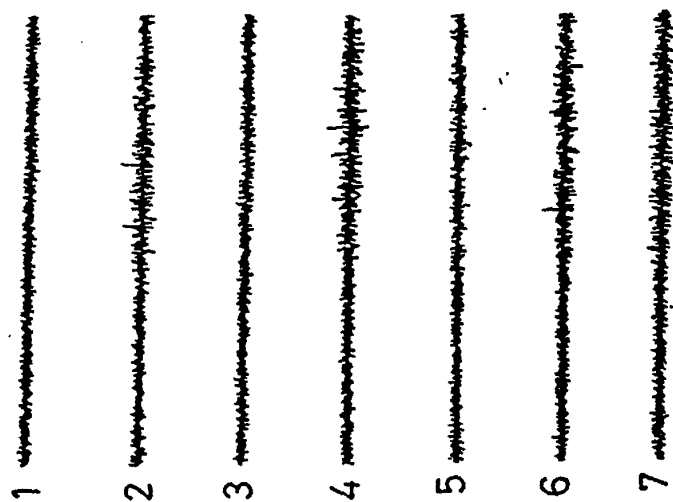


FIG.11(B)

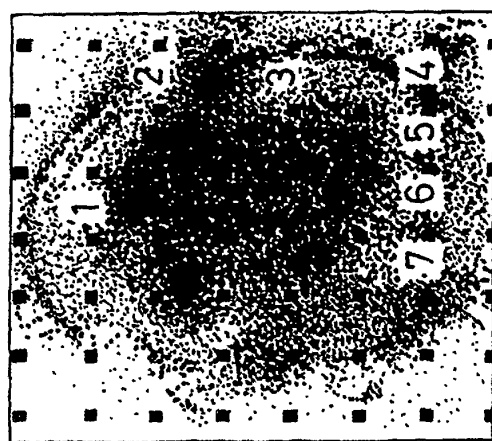


FIG.11(A)

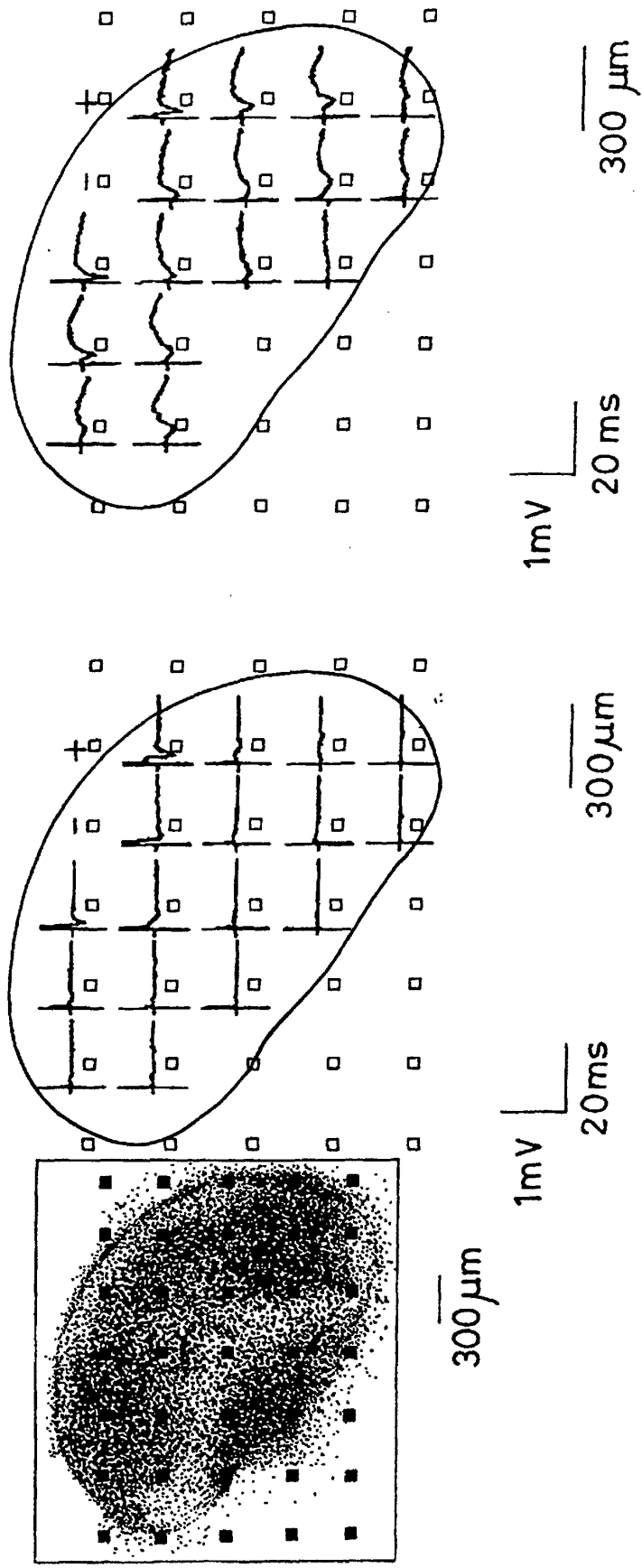


FIG.12(A)

FIG.12 (B)

FIG.12 (C)